

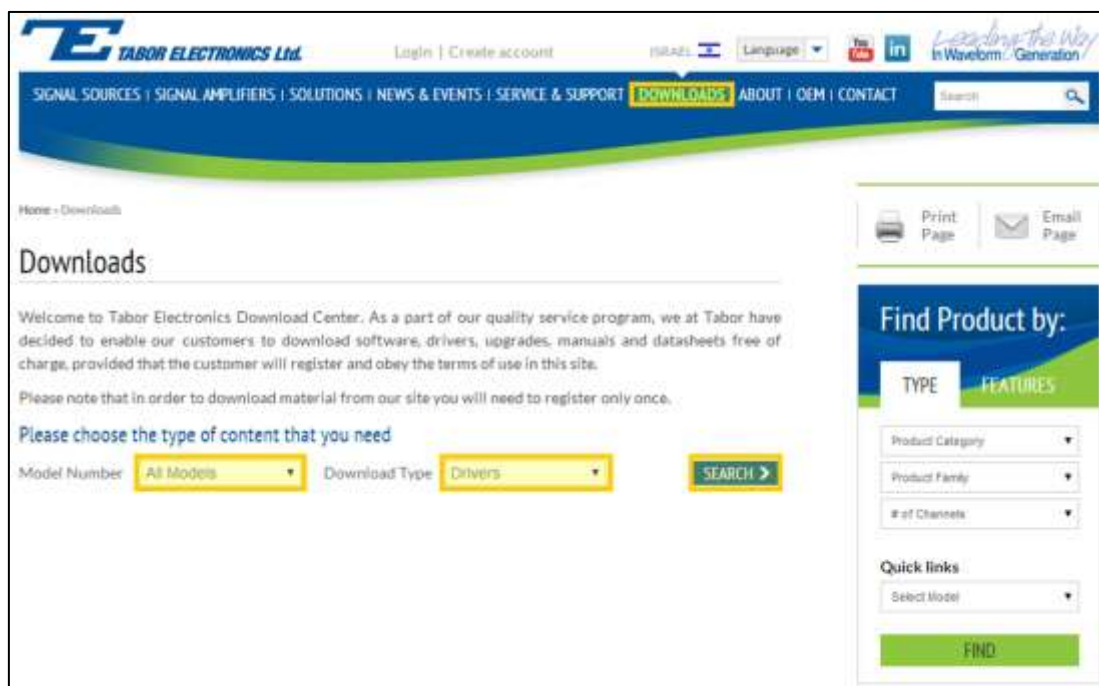
How to Simply Connect WW, WS & PM Series via USB

This document contains instructions on how to simply **connect to Tabor Electronics devices** via their USB port. The following devices are covered in this document.

- ◆ All WW, PM (none "A") and WS Series, excluding WS835x models

➔ **To connect the Tabor unit via the USB port:**

1. Install the USB device driver, which can be accessed either on the CD-ROM disk provided with your Tabor device, or from Tabor Electronics web site at <http://www.taborelec.com/>.
2. To download the driver from the web site, click on **Downloads**, and select the model from the **Model Number** drop-down box, and select "Drivers" from the **Download Type** drop-down box. Click on the **Search** button.



Download a suitable USB driver from the selection of drivers that appears.

- The .EXE version for Win XP
- The .ZIP version for Win7 64-bit

Drivers	USB Driver for the entire Wonder Wave, Pulse Master and Wave Standard Series (.exe version)	01/10/2009	Download (1.3 Mb)
	USB Driver for the entire Wonder Wave, Pulse Master and Wave Standard Series (.exe version)	Ver. 1.4	
Drivers	USB Driver for the entire Wonder Wave, Pulse Master and Wave Standard Series (.zip version)	01/10/2009	Download (725.9 Kb)
		Ver. 1.4	

- To activate the USB interface, access the **Select Interface** screen from the **Top Menu>>Utilities >> Remote Setup** menu, select the **USB** option, and press **ENTER**.



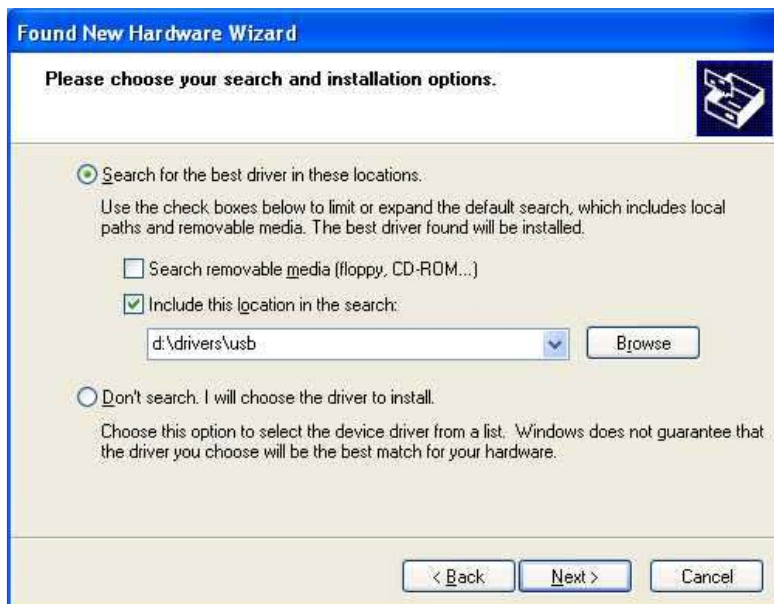
- Connect your computer to the device using a USB cable. The following message will appear on your computer screen:



- The Hardware Wizard appears as shown below. Choose the **Install from a list or specific location (Advanced)** option and click **Next**.



- The search window appears as shown below. If the driver is located on the installation CD, insert the CD into the computer's CD drive. Select the **Search for the best driver in these locations** button, check the **Include the location in the search** box, and enter the search path of the CD or the location of the driver on the PC (you can use the **Browse** button to select the path using the Browse dialog box). Click **Next**.



7. If the warning dialog box shown below is displayed, click **Continue Anyway**.



8. When the completion window shown below appears, click **Finish**.



The following message will appear on your computer screen:



9. The Hardware Wizard appears as shown below. Choose the **Install from a list or specific location (Advanced)** option and click **Next**.



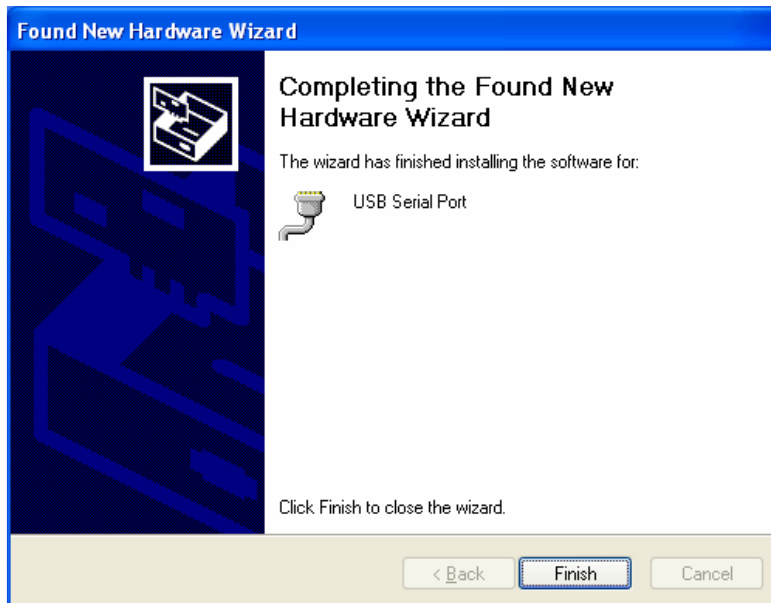
10. The search window appears as shown below. If the driver is located on the installation CD, insert the CD into the computer's CD drive. Select the **Search for the best driver in these locations** button, check the **Include the location in the search** box, and enter the search path of the CD or the location of the driver on the PC (you can use the **Browse** button to select the path using the Browse dialog box). Click **Next**.



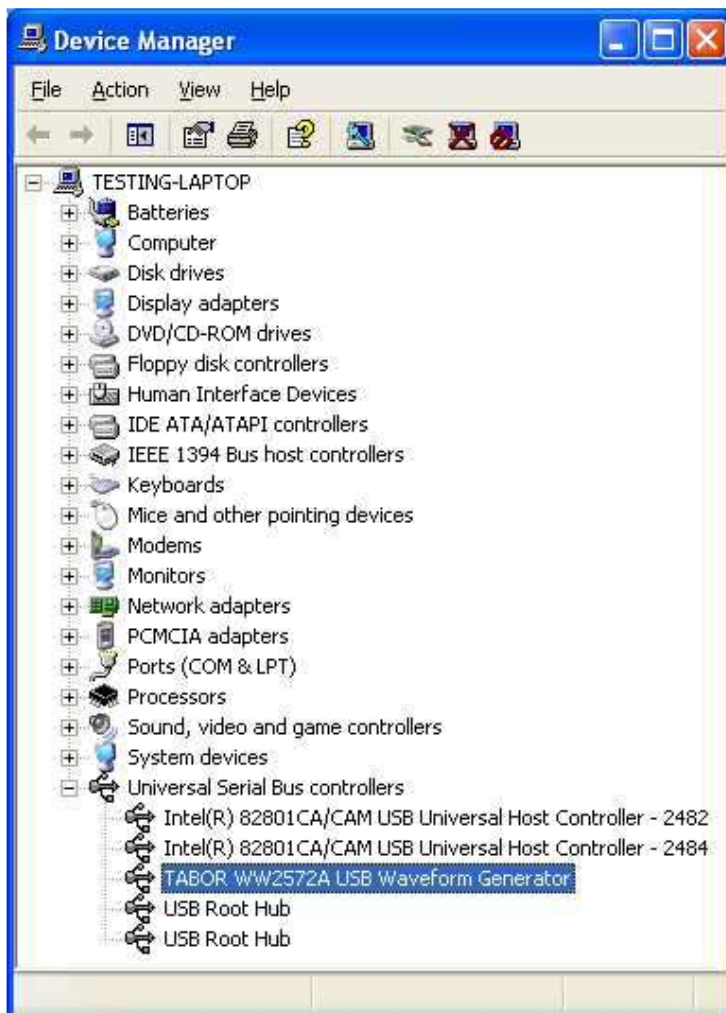
11. If the warning dialog box shown below is displayed, click **Continue Anyway**.



12. When the completion window shown below appears, click **Finish**.



13. To make sure the device's USB port is correctly configured, open your Device Manager (**Control Panel >> Hardware and Sound >> Devices and Printers >> Device Manager**) and compare the settings to the settings displayed in the window below.



For More Information

To learn more about Tabor's solutions or to schedule a demo, please contact your local Tabor representative or email your request to info@tabor.co.il. More information can be found at our website at www.taborelec.com

© Proprietary of Tabor Electronics Ltd.